

How to edit a Counter file

What is a Counter file?

A Counter file sets up from 1 to 5 numerical counters (called “Counter 1” through “Counter 5”) which can be used for either *or* both of the following:

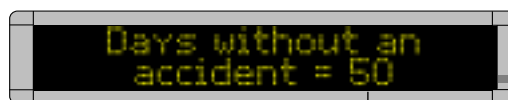
- ▶ **Used to display information in minutes, hours, or days on a sign. A counter icon can be included in a message to a sign:**



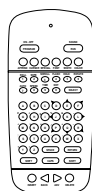
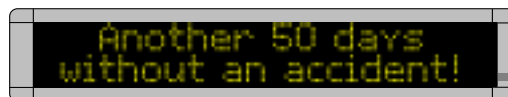
A counter can be placed inside a message.
(This one is counting down from 60 minutes.)



- ▶ **Used to display special messages (“target files”) on a sign after a set amount of time has passed.**



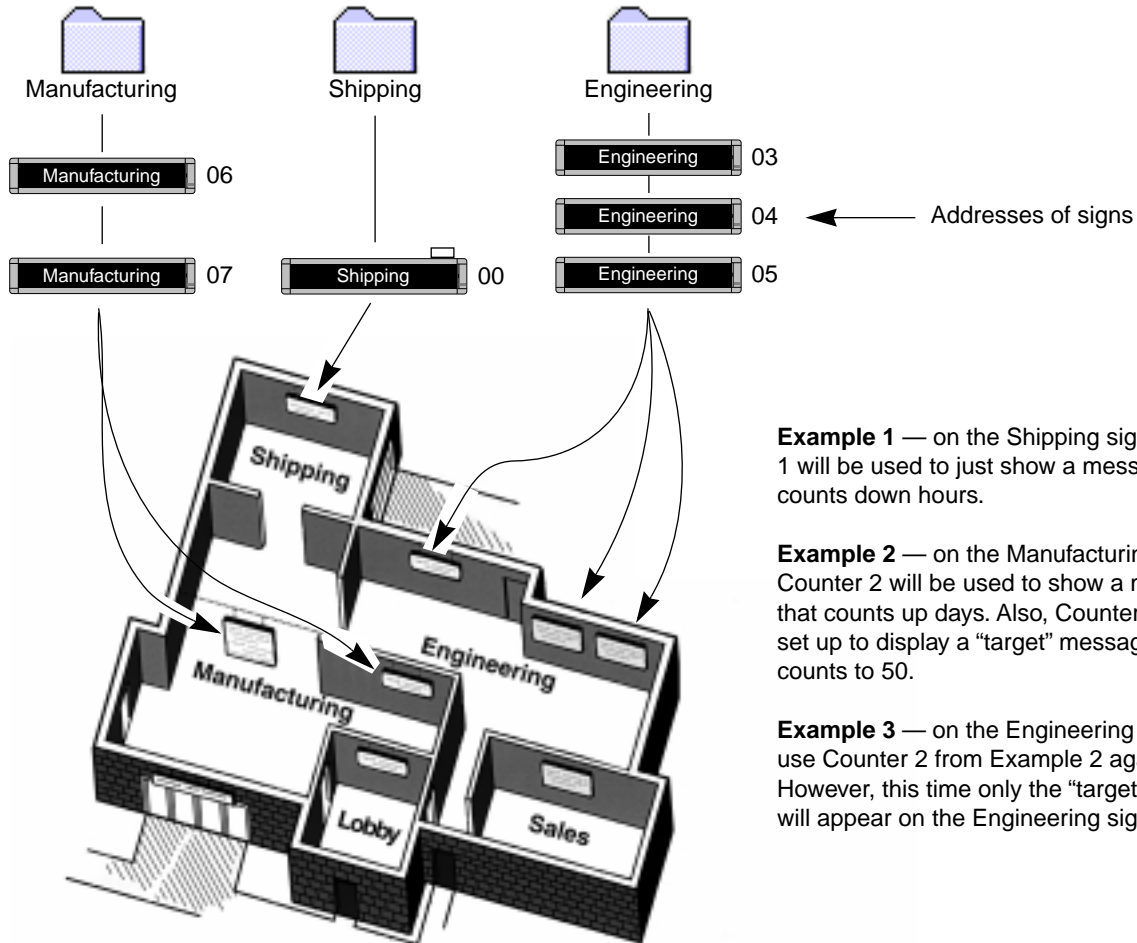
After 50 days, the counter included in the top message (which counts up from 0 to 50) is set up to display the “target” message below:



NOTE: The software necessary to use a Counter file is included in the EZ95 EPROM for signs and allows you to program a Counter file from your *computer*. However, the EZ95 EPROM does *not* allow you to program a Counter file using an infrared Remote Control (left).

Three examples of how to use Counter files

In these examples, we'll show the three basic ways of using counters on signs:



Example 1 — on the Shipping sign, Counter 1 will be used to just show a message that counts down hours.

Example 2 — on the Manufacturing signs, Counter 2 will be used to show a message that counts up days. Also, Counter 2 will be set up to display a “target” message when it counts to 50.

Example 3 — on the Engineering signs, we'll use Counter 2 from Example 2 again. However, this time only the “target” message will appear on the Engineering signs.

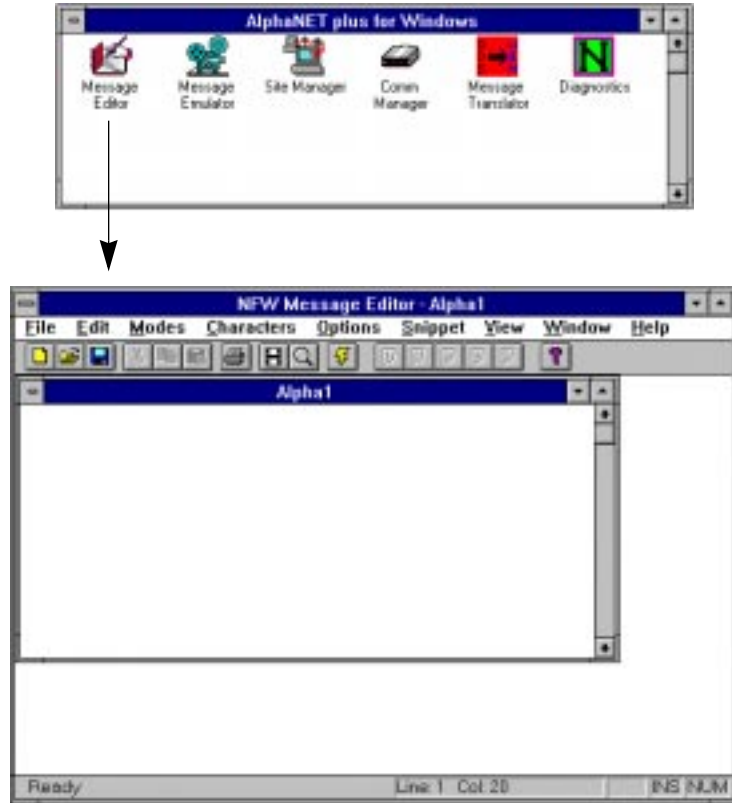
Example 1 — Using a counter in a message

In this example, we'll end up with a message on the Shipping sign that counts down from 60 minutes over and over again:

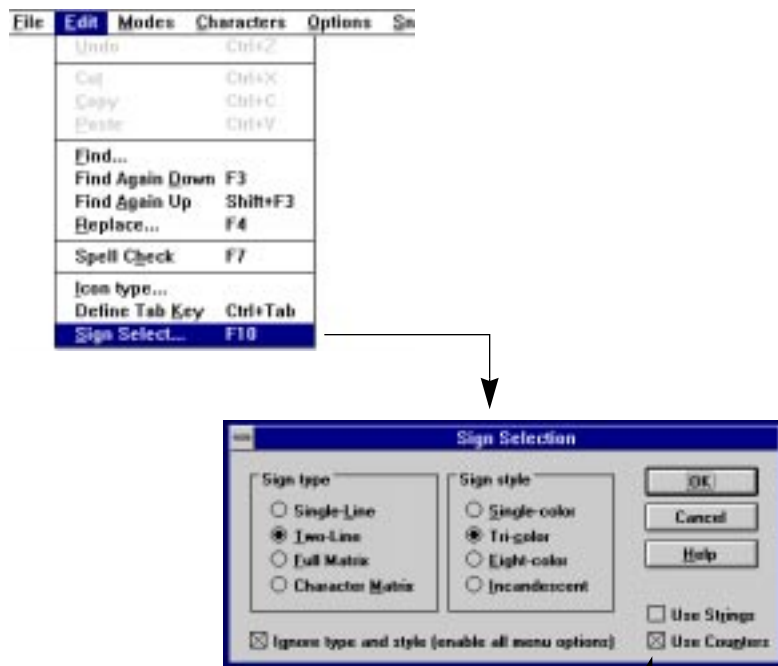
NOTE: The Shipping sign would still be able to display other messages.



1. First, open the **Message Editor** program and create a new message:

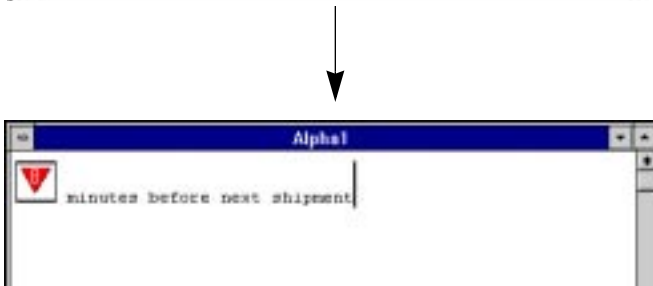
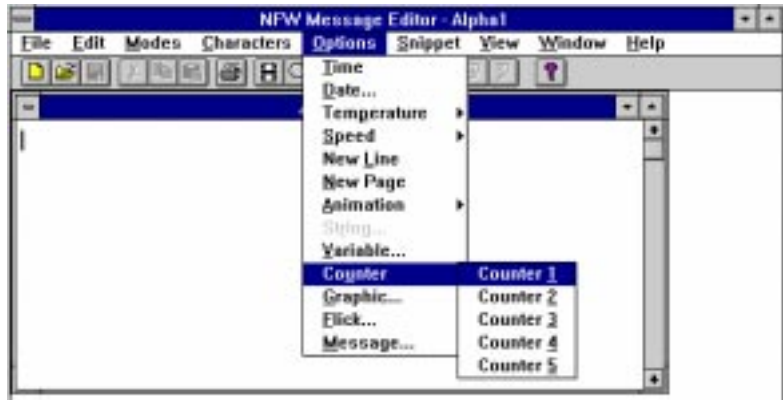


2. Next, select **Edit** and then **Sign Select**. When the following window appears, make sure that **Use Counters** is checked. Then select **OK**:



Check this box

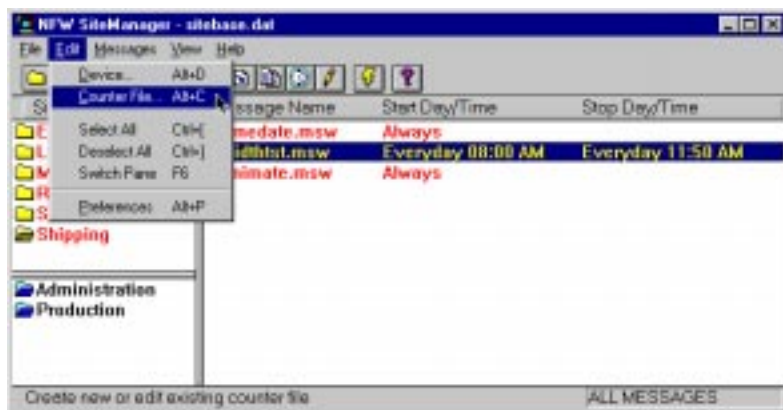
3. Add a counter to the message by selecting **Options**, **Counter**, and **Counter 1**. Then after the counter icon type a space and the words *minutes before next shipment*:



4. Save this counter message as *countshp.msw*:



5. After saving the message, close the **Message Editor**. Open the **Site Manager** program and select **Edit** and then **Counter File**:

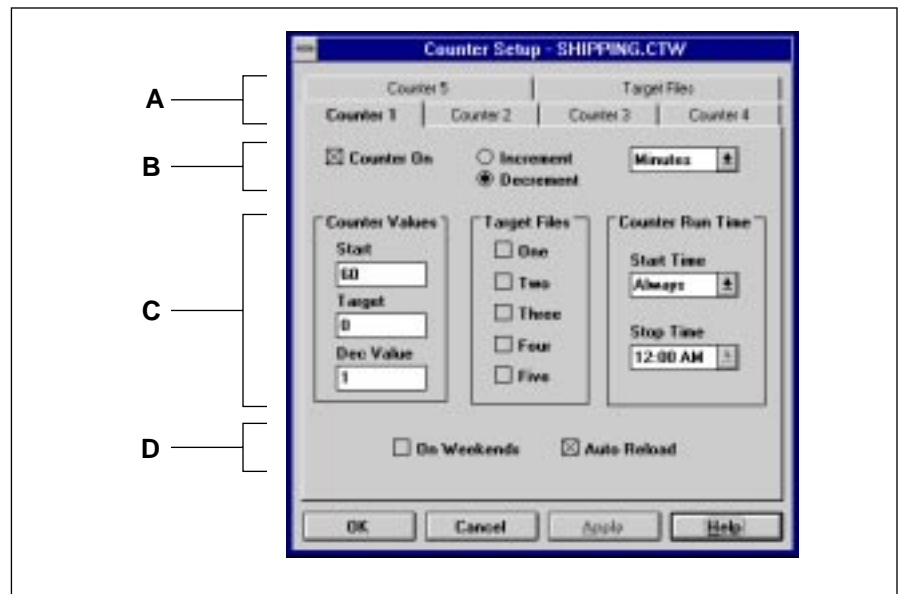


- Next, either open an existing Counter file (like the default file shown below) or type a new file name (like *shipping.ctw*):



- When the **Counter Setup** window appears, select **Counter 1** and enter the values as shown below:

Table 25: Counter Example 1 — Counter 1 setup.



| Item | Name | Directions |
|------|--------------------------|--|
| A | Counter 1 - 5 | Select Counter 1 . |
| | Target Files | This is where a message is assigned to a Target File . One to five messages that could be displayed on a sign when Counter 1 reaches its Target value. (No Target Files are used in this example.) |
| B | Counter On | Make sure this box is checked for this example. |
| | Increment Decrement | In this example select Decrement because we want Counter 1 to count down, not up. |
| | Minutes Hours Days | Select Minutes because we want Counter 1 to count in units of minutes. |

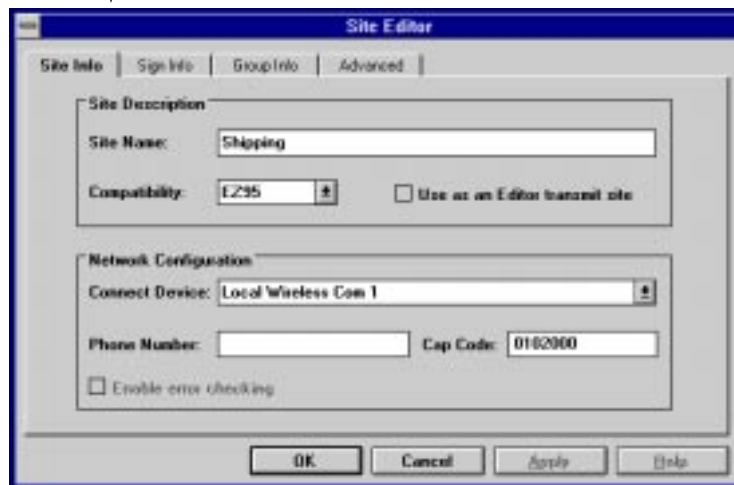
Table 25: Counter Example 1 — Counter 1 setup.

| | | | |
|------------------|-------------------------|---|--|
| C | Counter Values | Start | Enter 60 because we want Counter 1 to start at 60 minutes and then count down to 0. |
| | | Target | Enter 0. |
| | | Dec | Enter 1 because we want Counter 1 to count down 1 minute at a time—60, 59, 58, etc. |
| | Target Files | One - Five | This is where you would select which Target File messages to display when Counter 1 reaches its Target value. (No Target Files are used in this example so none are checked) |
| Counter Run Time | Start Time Stop Time | The times when you want the counter to run. In this example, <i>Always</i> is selected because we want Counter 1 running continuously. | |
| D | On Weekends | | Since we don't need our counter running on weekends, leave this unchecked. |
| | Auto Reload | | This box is checked because we want our counter to count down continuously. If this box was not checked, Counter 1 would count down from 60 to 0 just <i>once</i> . |

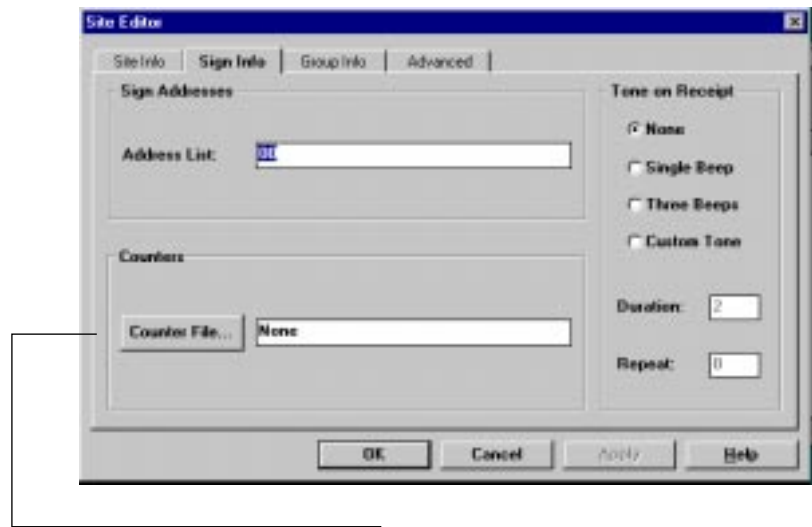
- 8.** Select **OK** after entering the information in **Counter Setup**. When this window appears, double click on the Shipping site, and the **Site Editor** window will appear:



Double click on Shipping.

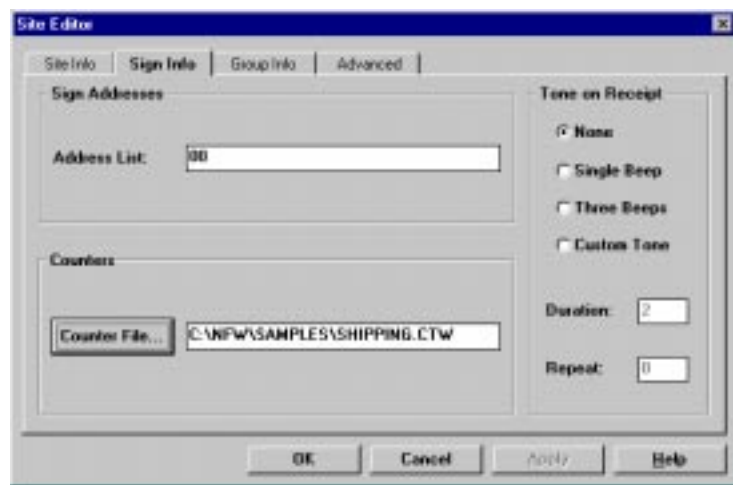
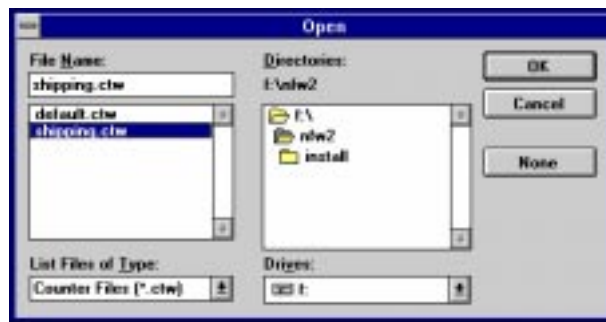


- Next, select **Sign Info** and attach the Counter file you just created to the Shipping site:



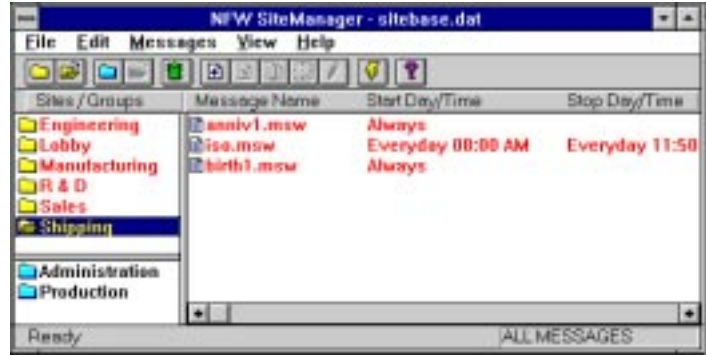
After clicking on **Counter File**, select the counter file you just edited. (In this case, *shipping.ctw*.) Then select **OK**.


Deleting a Counter file
 If you want to *delete* a Counter file from a sign, after clicking on **Counter File**, click on **None** and then **OK**.



Select **OK**.

10. Add the message that contains **Counter 1** to the Shipping site:



Select Shipping. Then select  :



Select the message that contains Counter 1, *countshp.msw*.

Click on **Add**.

Then click on **Close**.



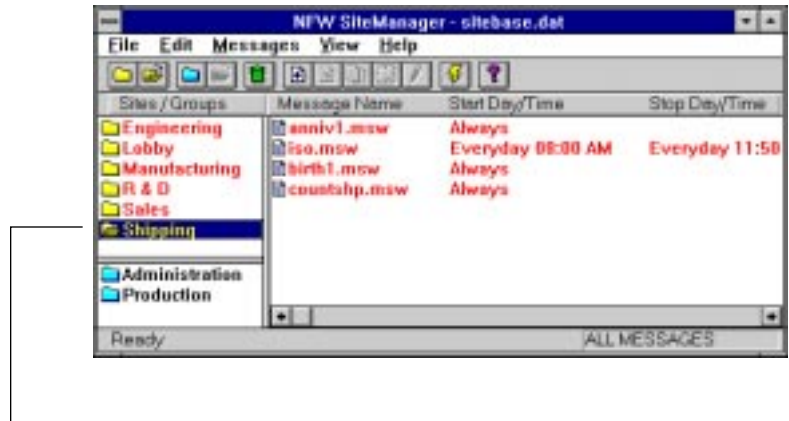
The message you added appears at the *end* of the list.

The order in which the messages appear is the order the messages are sent to a sign.

If you wanted the message at the *start* of the list, you should have selected the top message (*anniv1.msw*) and then

clicked on  instead of .

- Finally, in order to display the message you just added to the Shipping sign, the message must be transmitted. To do this, select the Shipping site and then select the transmit icon:



Select Shipping because this is the only site we want messages sent to.



Click on the transmit icon.

Resetting a Counter
 If you're prompted to reset a sign counter, select **Yes** to reset the counter to its Start value (see "Counter Example 2 — Target File setup." on page 54). Otherwise, select **No** to leave the sign's current value intact.



Click on **Selected Sites** and then **OK**.



All the messages will be sent to the Shipping site sign.



Example 2 — Using a counter in a message and displaying a target file message

In this example, we'll end up with a message on the Manufacturing signs that keeps track of the number of days without an accident.

Also, when 50 days is reached, a message appears on the Manufacturing signs that says *Another 50 days without an accident!* (This is called a “target” message.)

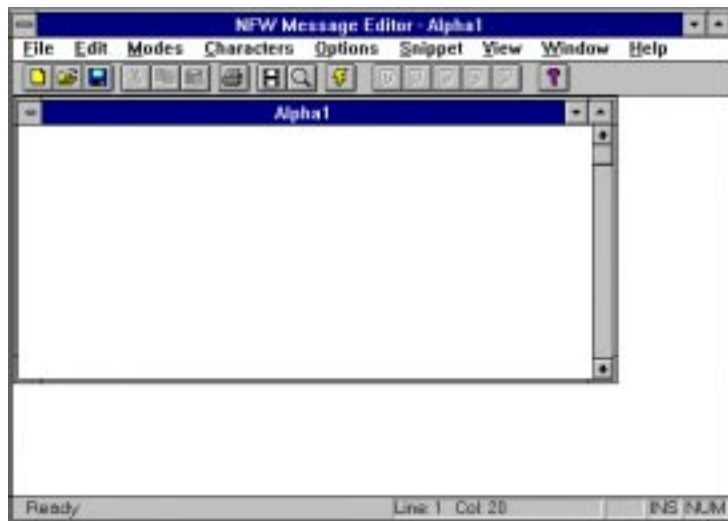
NOTE: The Manufacturing signs would still be able to display other messages.



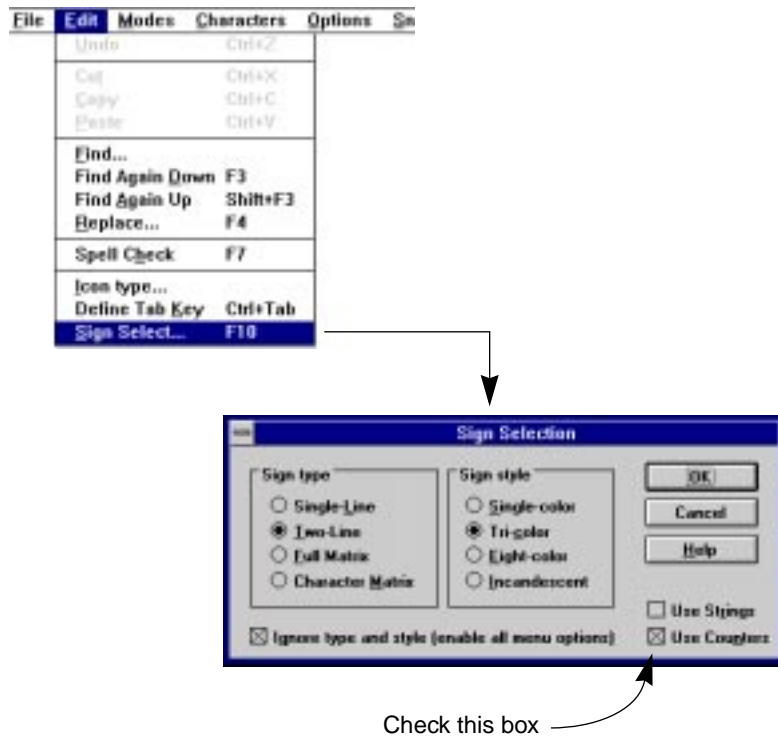
After 50 days, the counter included in the top message (which counts up from 0 to 50) is set up to display the “target” message below:



1. First, open the **Message Editor** program and create a new message:

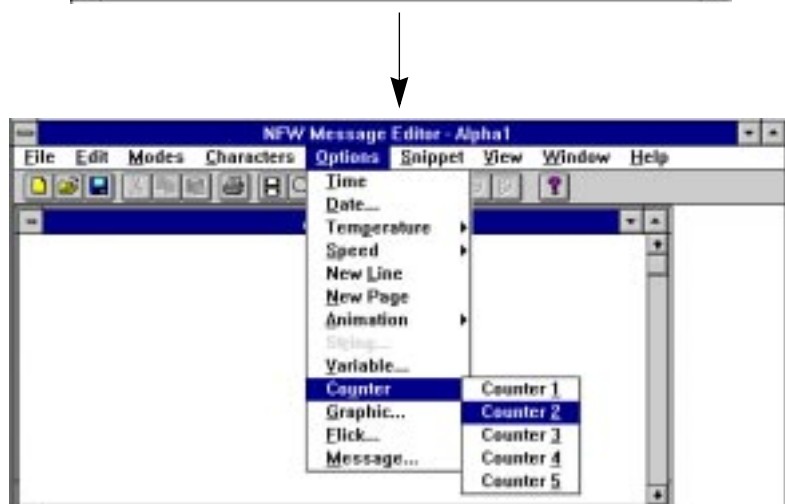


- Next, select **Edit** and then **Sign Select**. When the following window appears, make sure that **Use Counters** is checked. Then select **OK**:

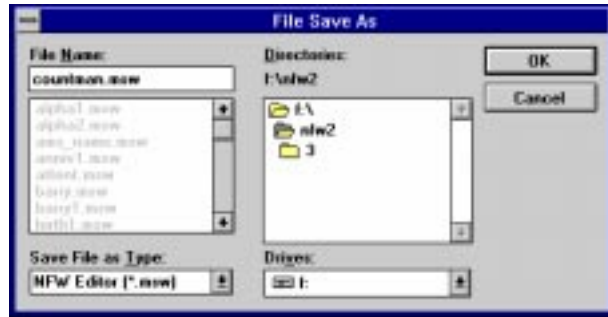


Check this box

- In the message window, type the words *Days without an accident* and a space. Then add a counter to the message by selecting **Options**, **Counter**, and **Counter 2**:



4. Save this counter message as *countman.msw*:



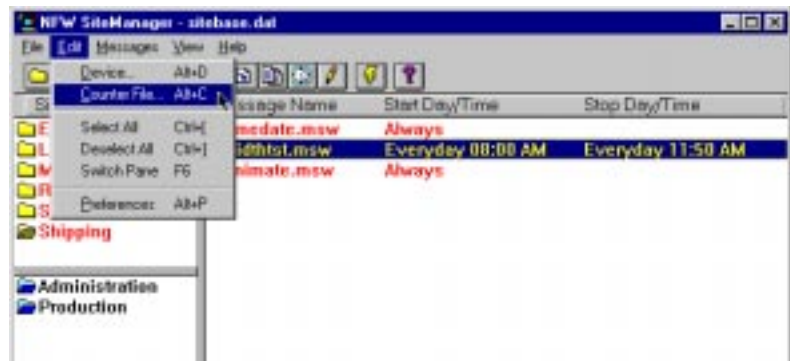
5. Next, create the “target” message — the message that will appear when Counter 2 reaches 50 days. Then save this message as *target1.msw*:



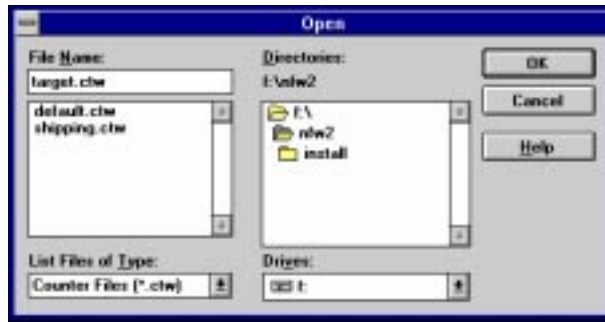
Save the target message as *target1.msw*.



6. After saving the target message, close the **Message Editor**. Open the **Site Manager** and select **Edit** and then **Counter File**:

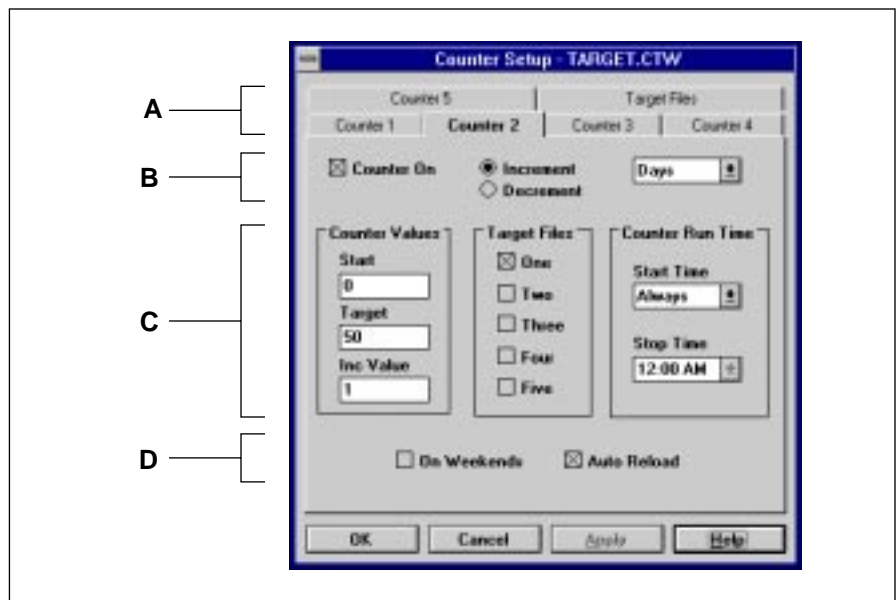


- Next, either open an existing Counter file (like the default file shown below) or type a new file name (such as *target.ctw*):



- When the **Counter Setup** window appears, select **Counter 2** and enter the values shown below:

Table 26: Counter Example 2 — Counter 2 setup.



| Item | Name | Directions |
|------|--------------------------|---|
| A | Counter 1 - 5 | Select Counter 2 . |
| | Target Files | This is where a message is assigned to a Target File . One to five messages that could be displayed on a sign when Counter 2 reaches its Target value. |
| B | Counter On | Make sure this box is checked for this example. |
| | Increment Decrement | In this example select Increment because we want Counter 2 to count up, not down. |
| | Minutes Hours Days | Select Days because we want Counter 2 to count in units of days. |

Table 26: Counter Example 2 — Counter 2 setup.

| | | | |
|------------------|-------------------------|---|---|
| C | Counter Values | Start | Enter 0 because we want Counter 2 to start at 0 days and then count up to 50. |
| | | Target | Enter 50. |
| | | Inc | Enter 1 because we want Counter 2 to count up 1 day at a time — 1, 2, 3, etc. |
| | Target Files | One - Five | Check One . This means that one message will appear on the sign after Counter 2 has reached its target value. |
| Counter Run Time | Start Time Stop Time | The times when you want the counter to run. In this example, <i>Always</i> is selected because we want Counter 2 running continuously. | |
| D | On Weekends | | Since we don't need our counter running on weekends, leave this unchecked. |
| | Auto Reload | | This box is checked because we want our counter to count down continuously. If this box was not checked, Counter 2 would count up to 50 just <i>once</i> . |

9. Next, select **Target Files**:

Table 27: Counter Example 2 — Target File setup.

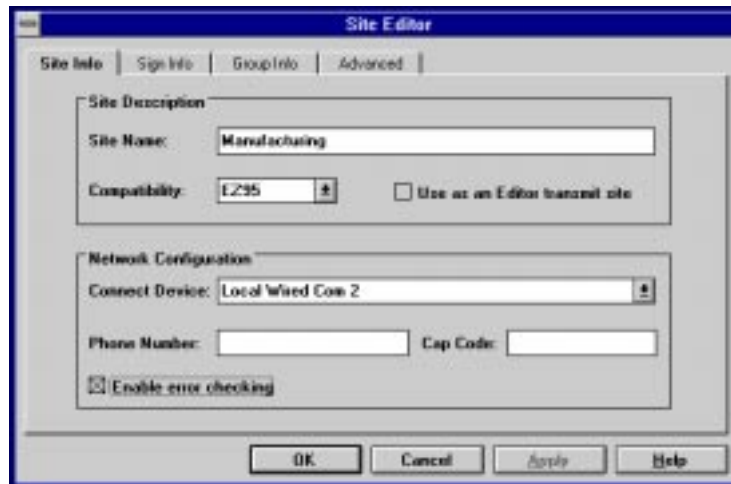
A

| Item | Name | Directions |
|------|-------------------|--|
| A | Target File 1 - 5 | For Target File 1 , select Browse and then select the file you created called <i>target1.msw</i> . |

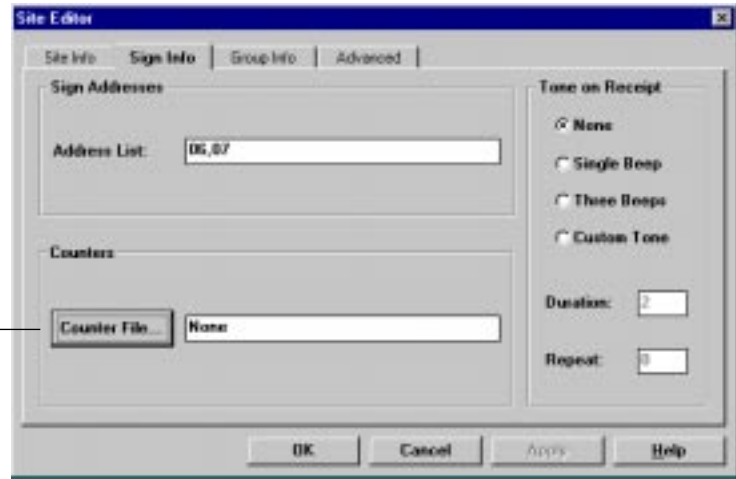
10. After selecting the target file, click on **OK**. When this window appears, double click on the Manufacturing site, and the **Site Editor** window will appear:



Double click on Manufacturing.



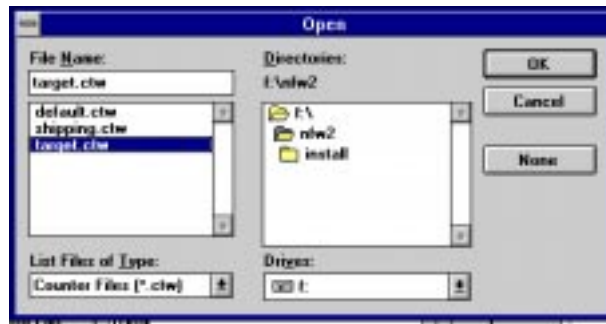
11. Next, select **Sign Info** and attach the Counter file you just created to the Manufacturing site:



After clicking on **Counter File**, select the counter file you just edited. (In this case, *target.ctw*.) Then select **OK**.

Deleting a Counter file


If you want to *delete* a Counter file from a sign, after clicking on **Counter File**, click on **None** and then **OK**.



Select **OK**.

12. Add the message that contains **Counter 2** to the Manufacturing site:



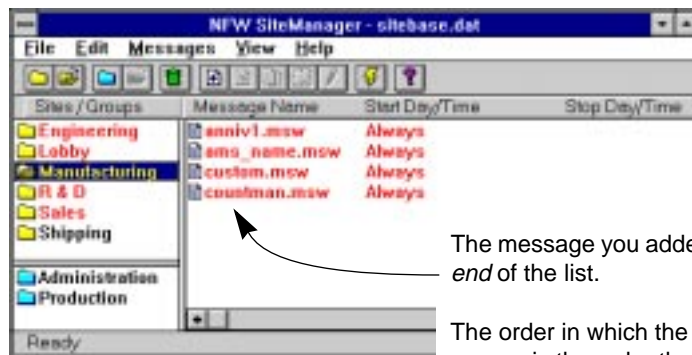
Select Manufacturing. Then select  :



Select the message that contains Counter 2, *countman.msw*.

Click on **Add**.

Then click on **Close**.



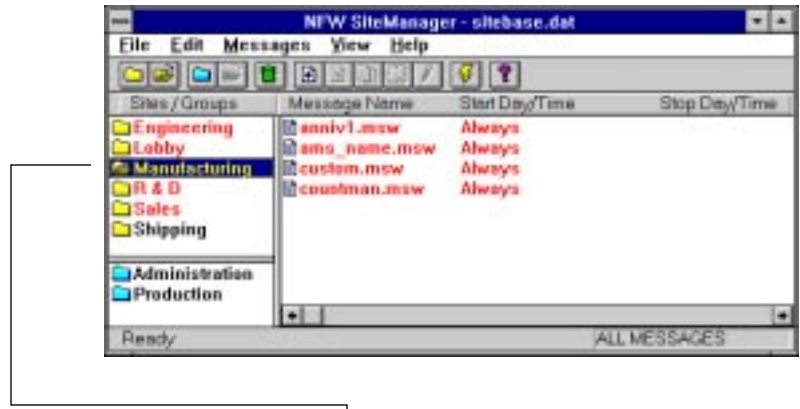
The message you added appears at the *end* of the list.

The order in which the messages appear is the order the messages are sent to a sign.

If you wanted the message at the *start* of the list, you should have selected the top message (*anniv1.msw*) and then

clicked on  instead of .

13. Finally, in order to display the message you just added, it must be transmitted to the Manufacturing signs. To do this, select the Manufacturing site and then the transmit icon:



Select Manufacturing because this is the only site we want messages sent to.



Click on the transmit icon.

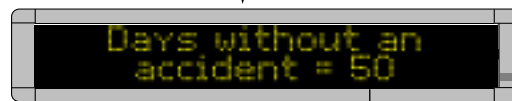
Resetting a Counter
 If you're prompted to reset a sign counter, select **Yes** to reset the counter to its Start value (see "Counter Example 2 — Target File setup." on page 54). Otherwise, select **No** to leave the sign's current value intact.



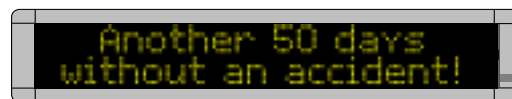
Click on **Selected Sites** and then **OK**.



All the messages will be sent to the Manufacturing site signs.



After 50 days, the counter included in the top message (which counts up from 0 to 50) is set up to display the "target" message below:



Example 3 — Using a counter to display just a target message

HINT

This example is nearly identical to Example 2.

In Example 2, the counter was displayed in a message *and* a target message was also displayed.

In Example 3, only the target message will be shown. The counter will just be used to count. It will not be displayed.

In this example, we'll use one of the five counters (in this case, Counter 3) to display the message *Another 100 hours of safe operation!* When Counter 3 reaches 100 hours, the message will appear on all the signs in the Engineering site. (This site was created in the previous section “Step-by-step tutorial in setting up devices, groups, and sites” on page 9.)

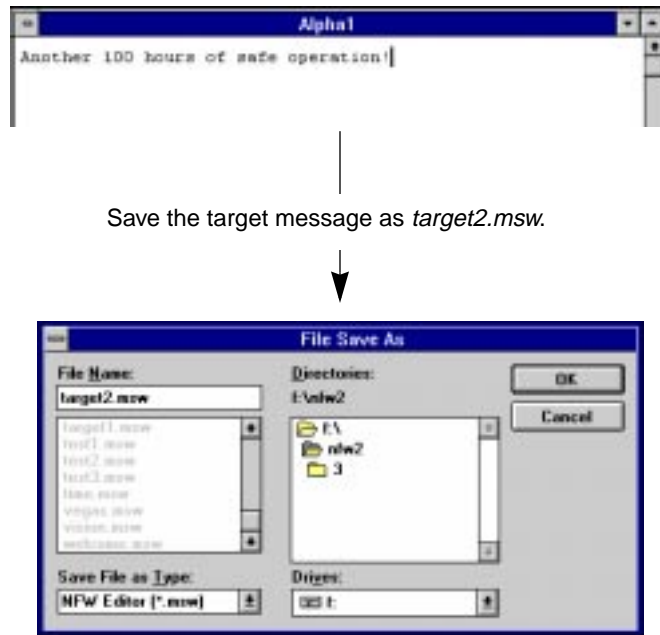
NOTE: The Engineering signs would still be able to display other messages.



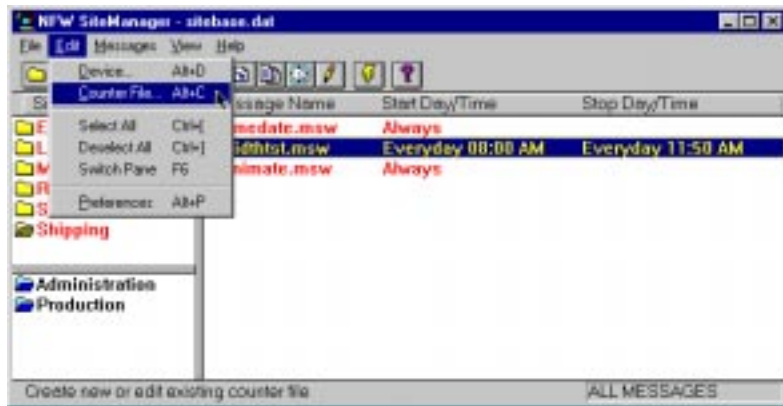
1. Open the **Message Editor** program and create a new message:



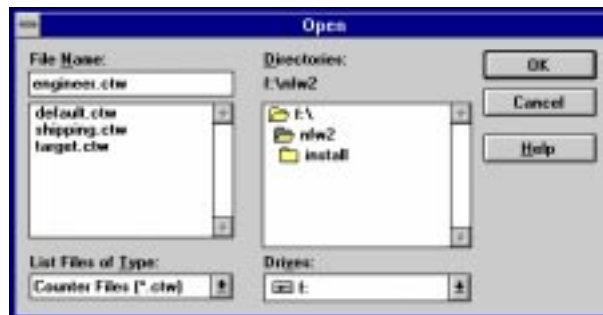
- Next, create the “target” message — the message that will appear when Counter 3 reaches 100 hours. Then save this message as *target2.msw*:



- After saving the target message, close the **Message Editor**. Open the **Site Manager** and select **Edit** and then **Counter File**:

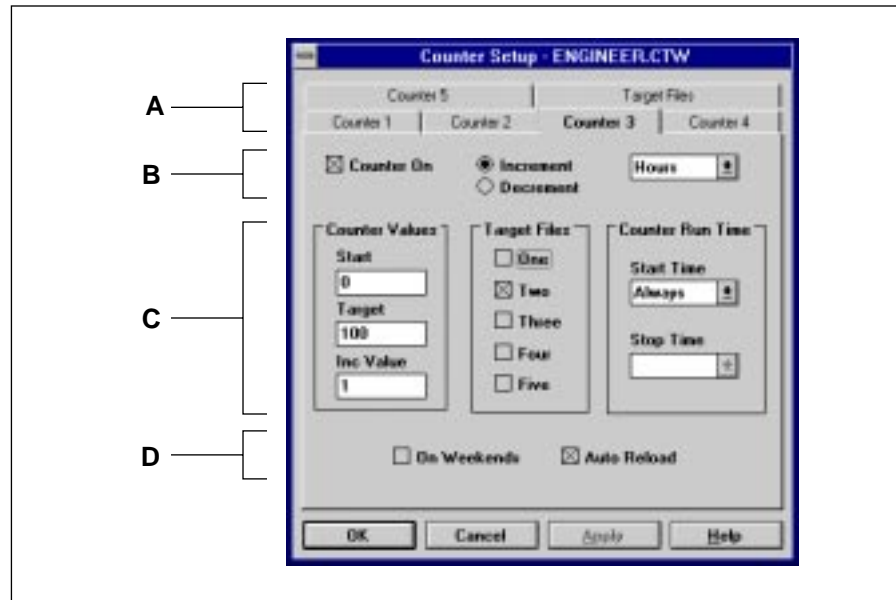


- Next, either open an existing Counter file (like the default file shown below) or type a new file name (like *engineer.ctw*):



5. When the **Counter Setup** window appears, select **Counter 3** and enter the values shown below:

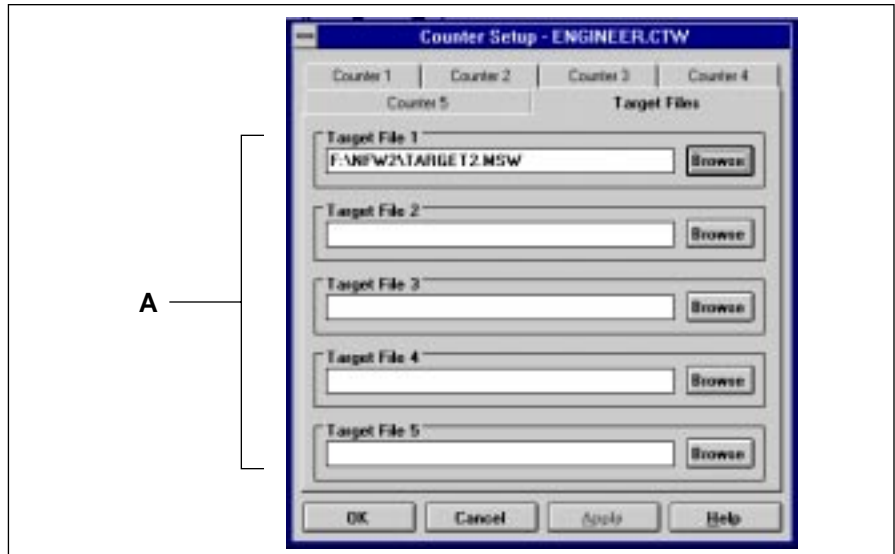
Table 28: Counter Example 3 — Counter 3 setup.



| Item | Name | Directions | |
|------|--------------------------|---|---|
| A | Counter 1 - 5 | Select Counter 3 . | |
| | Target Files | This is where a message is assigned to a Target File . One to five messages that could be displayed on a sign when Counter 3 reaches its Target value. | |
| B | Counter On | Make sure this box is checked for this example. | |
| | Increment Decrement | In this example select Increment because we want Counter 3 to count up, not down. | |
| | Minutes Hours Days | Select Hours because we want Counter 3 to count in units of hours. | |
| C | Counter Values | Start | Enter 0 because we want Counter 3 to start at 0 hours and then count up to 100. |
| | | Target | Enter 100. |
| | | Inc | Enter 1 because we want Counter 3 to count up 1 hour at a time—1, 2, 3, etc. |
| | Target Files | One - Five | Check Two . This means that one message will appear on the sign after Counter 3 has reached its target value. |
| | Counter Run Time | Start Time Stop Time | The times when you want the counter to run. In this example, <i>Always</i> is selected because we want Counter 3 running continuously. |
| D | On Weekends | Since we don't need our counter running on weekends, leave this unchecked. | |
| | Auto Reload | This box is checked because we want our counter to count down continuously. If this box was not checked, Counter 3 would count up to 100 just <i>once</i> . | |

6. Next, select **Target Files**:

Table 29: Counter Example 3 — Target File setup.

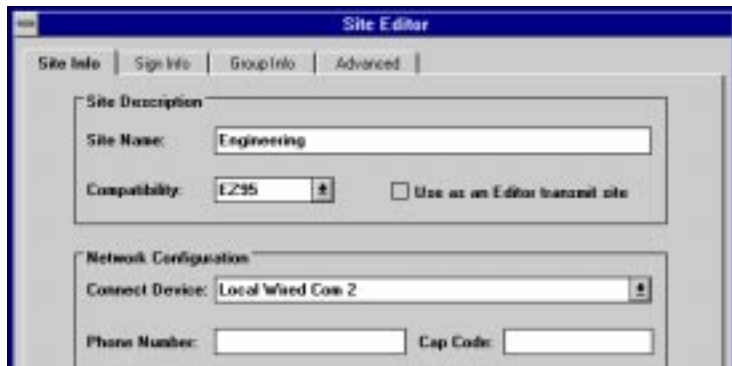


| Item | Name | Directions |
|------|-------------------|--|
| A | Target File 1 - 5 | For Target File 1 , select Browse and then select the file you created called <i>target2.msw</i> . |

7. After selecting the target file, click on **OK**. When this window appears, double click on the Engineering site, and the **Site Editor** window will appear:



Double click on Engineering.



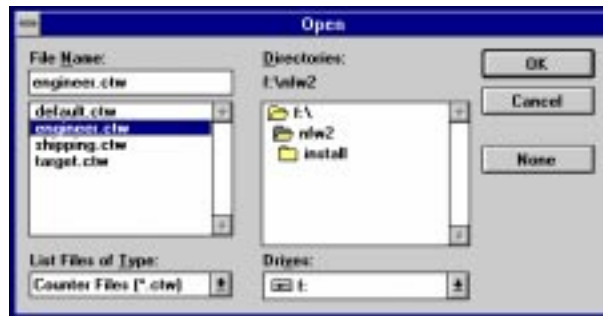
- Next, select **Sign Info** and attach the Counter file you just created to the Engineering site, and you're done:



After clicking on *Counter File*, select the counter file you just edited. (In this case, *engineer.ctw*.) Then select **OK**.

Deleting a Counter file

If you want to *delete* a Counter file from a sign, after clicking on **Counter File**, click on **None** and then **OK**.



Select **OK**.